



**2024 VALUES
VOTER GUIDE
AUGUST 20TH, 2024**

**WESTERN AND NORTHERN
RURAL ALASKA**

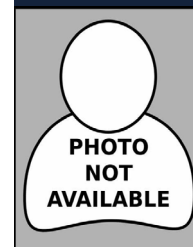


**US HOUSE &
ALASKA LEGISLATIVE RACES**



US HOUSE CANDIDATES

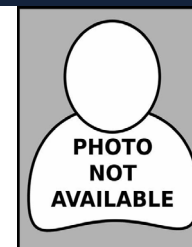
US HOUSE



David Ambrose



Nick Begich



Samuel Claesson



Nancy Dahlstrom

1. Would you support allowing public health programs such as Medicaid to cover infertility services like IVF?
2. Would you oppose providing public funding for elective abortions beyond the federal Hyde amendment, which limits funding to instances of rape, incest and to save the mother's life?
3. Would you support establishing a federal prohibition on abortion after the point at which the baby can feel pain (approximately between 12 and 15 weeks)?
4. Would you support requiring immediate reasonable medical attention to be given to any baby that survives a failed abortion attempt?
5. Would you support establishing age requirements for TikTok and other social media platforms?
6. Would you support prohibiting biological males who self-identify as female from competing on all-girls' high school or collegiate athletic teams?
7. Would you support prohibiting medical clinics from providing gender reassignment treatments and surgeries for minors, regardless of parental preference?
8. Would you support restricting public funding for colleges and universities that require DEI (diversity, equity, and inclusion) training?
9. Would you support prohibiting banks and investment entities from closing accounts of churches and faith-based entities because of their religious beliefs?
10. Would you oppose allowing the 2017 Tax Cuts and Jobs Act, which lowered tax rates for families and expanded the child tax credit, to expire in 2025?
11. Ballot Measure 2, which narrowly passed in 2020, overturned our traditional election method, eliminating party primaries and installing ranked-choice voting (RCV) in general elections. Do you support repealing Ballot Measure 2?
12. Did you sign the petition to repeal Ballot Measure 2?
13. Closed primaries allow members of political parties to elect the candidate who will carry their banner without interference from those who don't share their values. By replacing closed primaries with the current "jungle primary," Ballot Measure 2 allows multiple candidates from a single party to proceed to the general election, increasing voter confusion, and potentially leading to adverse outcomes due to ballot exhaustion. Candidates can effect the same result as closed primaries if they pledge to withdraw if they come in behind another member of their own party in the primary. Do you pledge to withdraw from the race if, in the primary election, you receive fewer votes than another member of your own party?
14. Would you support establishing a national school choice tax credit (i.e. Educational Choice for Children Act) that allows families to access scholarships through private donations to help their child attend a K-12 school that best meets his or her needs?

DID NOT RESPOND

DID NOT RESPOND

Question	David Ambrose	Nick Begich	Samuel Claesson	Nancy Dahlstrom
1. Would you support allowing public health programs such as Medicaid to cover infertility services like IVF?		NO		NO
2. Would you oppose providing public funding for elective abortions beyond the federal Hyde amendment, which limits funding to instances of rape, incest and to save the mother's life?		YES ✓		YES ✓
3. Would you support establishing a federal prohibition on abortion after the point at which the baby can feel pain (approximately between 12 and 15 weeks)?		YES ✓		YES ✓
4. Would you support requiring immediate reasonable medical attention to be given to any baby that survives a failed abortion attempt?		YES ✓		YES ✓
5. Would you support establishing age requirements for TikTok and other social media platforms?		YES ✓		YES ✓
6. Would you support prohibiting biological males who self-identify as female from competing on all-girls' high school or collegiate athletic teams?		YES ✓		YES ✓
7. Would you support prohibiting medical clinics from providing gender reassignment treatments and surgeries for minors, regardless of parental preference?		YES ✓		YES ✓
8. Would you support restricting public funding for colleges and universities that require DEI (diversity, equity, and inclusion) training?		YES ✓		YES ✓
9. Would you support prohibiting banks and investment entities from closing accounts of churches and faith-based entities because of their religious beliefs?		YES ✓		YES ✓
10. Would you oppose allowing the 2017 Tax Cuts and Jobs Act, which lowered tax rates for families and expanded the child tax credit, to expire in 2025?		YES ✓		YES ✓
11. Ballot Measure 2, which narrowly passed in 2020, overturned our traditional election method, eliminating party primaries and installing ranked-choice voting (RCV) in general elections. Do you support repealing Ballot Measure 2?		YES ✓		DNR*
12. Did you sign the petition to repeal Ballot Measure 2?		YES ✓		DNR*
13. Closed primaries allow members of political parties to elect the candidate who will carry their banner without interference from those who don't share their values. By replacing closed primaries with the current "jungle primary," Ballot Measure 2 allows multiple candidates from a single party to proceed to the general election, increasing voter confusion, and potentially leading to adverse outcomes due to ballot exhaustion. Candidates can effect the same result as closed primaries if they pledge to withdraw if they come in behind another member of their own party in the primary. Do you pledge to withdraw from the race if, in the primary election, you receive fewer votes than another member of your own party?		YES ✓		NO ⊗
14. Would you support establishing a national school choice tax credit (i.e. Educational Choice for Children Act) that allows families to access scholarships through private donations to help their child attend a K-12 school that best meets his or her needs?		YES ✓		YES ✓



US HOUSE CANDIDATES, CONT'D

US HOUSE



Lady Donna Dutchess



Richard Grayson



Eric Hafner



Gerald Heikes

1. Would you support allowing public health programs such as Medicaid to cover infertility services like IVF?
2. Would you oppose providing public funding for elective abortions beyond the federal Hyde amendment, which limits funding to instances of rape, incest and to save the mother's life?
3. Would you support establishing a federal prohibition on abortion after the point at which the baby can feel pain (approximately between 12 and 15 weeks)?
4. Would you support requiring immediate reasonable medical attention to be given to any baby that survives a failed abortion attempt?
5. Would you support establishing age requirements for TikTok and other social media platforms?
6. Would you support prohibiting biological males who self-identify as female from competing on all-girls' high school or collegiate athletic teams?
7. Would you support prohibiting medical clinics from providing gender reassignment treatments and surgeries for minors, regardless of parental preference?
8. Would you support restricting public funding for colleges and universities that require DEI (diversity, equity, and inclusion) training?
9. Would you support prohibiting banks and investment entities from closing accounts of churches and faith-based entities because of their religious beliefs?
10. Would you oppose allowing the 2017 Tax Cuts and Jobs Act, which lowered tax rates for families and expanded the child tax credit, to expire in 2025?
11. Ballot Measure 2, which narrowly passed in 2020, overturned our traditional election method, eliminating party primaries and installing ranked-choice voting (RCV) in general elections. Do you support repealing Ballot Measure 2?
12. Did you sign the petition to repeal Ballot Measure 2?
13. Closed primaries allow members of political parties to elect the candidate who will carry their banner without interference from those who don't share their values. By replacing closed primaries with the current "jungle primary," Ballot Measure 2 allows multiple candidates from a single party to proceed to the general election, increasing voter confusion, and potentially leading to adverse outcomes due to ballot exhaustion. Candidates can effect the same result as closed primaries if they pledge to withdraw if they come in behind another member of their own party in the primary. Do you pledge to withdraw from the race if, in the primary election, you receive fewer votes than another member of your own party?
14. Would you support establishing a national school choice tax credit (i.e. Educational Choice for Children Act) that allows families to access scholarships through private donations to help their child attend a K-12 school that best meets his or her needs?

DID NOT RESPOND

DID NOT RESPOND

Response	Lady Donna Dutchess	Richard Grayson	Eric Hafner	Gerald Heikes
1. Would you support allowing public health programs such as Medicaid to cover infertility services like IVF?		YES		NO
2. Would you oppose providing public funding for elective abortions beyond the federal Hyde amendment, which limits funding to instances of rape, incest and to save the mother's life?		UNDECIDED		YES ✓
3. Would you support establishing a federal prohibition on abortion after the point at which the baby can feel pain (approximately between 12 and 15 weeks)?		UNDECIDED		YES ✓
4. Would you support requiring immediate reasonable medical attention to be given to any baby that survives a failed abortion attempt?		UNDECIDED		YES ✓
5. Would you support establishing age requirements for TikTok and other social media platforms?		YES ✓		NO ✗
6. Would you support prohibiting biological males who self-identify as female from competing on all-girls' high school or collegiate athletic teams?		UNDECIDED		YES ✓
7. Would you support prohibiting medical clinics from providing gender reassignment treatments and surgeries for minors, regardless of parental preference?		NO ✗		YES ✓
8. Would you support restricting public funding for colleges and universities that require DEI (diversity, equity, and inclusion) training?		NO ✗		YES ✓
9. Would you support prohibiting banks and investment entities from closing accounts of churches and faith-based entities because of their religious beliefs?		DNR		YES ✓
10. Would you oppose allowing the 2017 Tax Cuts and Jobs Act, which lowered tax rates for families and expanded the child tax credit, to expire in 2025?		UNDECIDED		YES ✓
11. Ballot Measure 2, which narrowly passed in 2020, overturned our traditional election method, eliminating party primaries and installing ranked-choice voting (RCV) in general elections. Do you support repealing Ballot Measure 2?		NO ✗		YES ✓
12. Did you sign the petition to repeal Ballot Measure 2?		NO ✗		YES ✓
13. Closed primaries allow members of political parties to elect the candidate who will carry their banner without interference from those who don't share their values. By replacing closed primaries with the current "jungle primary," Ballot Measure 2 allows multiple candidates from a single party to proceed to the general election, increasing voter confusion, and potentially leading to adverse outcomes due to ballot exhaustion. Candidates can effect the same result as closed primaries if they pledge to withdraw if they come in behind another member of their own party in the primary. Do you pledge to withdraw from the race if, in the primary election, you receive fewer votes than another member of your own party?		UNDECIDED		NO ✗
14. Would you support establishing a national school choice tax credit (i.e. Educational Choice for Children Act) that allows families to access scholarships through private donations to help their child attend a K-12 school that best meets his or her needs?		NO ✗		YES ✓

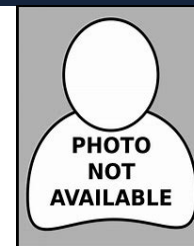


US HOUSE CANDIDATES, CONT'D

US HOUSE



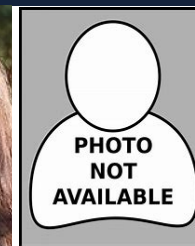
John Wayne Howe



Richard Von Mayers



Mary Peltola



Matthew Salisbury

1. Would you support allowing public health programs such as Medicaid to cover infertility services like IVF?
2. Would you oppose providing public funding for elective abortions beyond the federal Hyde amendment, which limits funding to instances of rape, incest and to save the mother's life?
3. Would you support establishing a federal prohibition on abortion after the point at which the baby can feel pain (approximately between 12 and 15 weeks)?
4. Would you support requiring immediate reasonable medical attention to be given to any baby that survives a failed abortion attempt?
5. Would you support establishing age requirements for TikTok and other social media platforms?
6. Would you support prohibiting biological males who self-identify as female from competing on all-girls' high school or collegiate athletic teams?
7. Would you support prohibiting medical clinics from providing gender reassignment treatments and surgeries for minors, regardless of parental preference?
8. Would you support restricting public funding for colleges and universities that require DEI (diversity, equity, and inclusion) training?
9. Would you support prohibiting banks and investment entities from closing accounts of churches and faith-based entities because of their religious beliefs?
10. Would you oppose allowing the 2017 Tax Cuts and Jobs Act, which lowered tax rates for families and expanded the child tax credit, to expire in 2025?
11. Ballot Measure 2, which narrowly passed in 2020, overturned our traditional election method, eliminating party primaries and installing ranked-choice voting (RCV) in general elections. Do you support repealing Ballot Measure 2?
12. Did you sign the petition to repeal Ballot Measure 2?
13. Closed primaries allow members of political parties to elect the candidate who will carry their banner without interference from those who don't share their values. By replacing closed primaries with the current "jungle primary," Ballot Measure 2 allows multiple candidates from a single party to proceed to the general election, increasing voter confusion, and potentially leading to adverse outcomes due to ballot exhaustion. Candidates can effect the same result as closed primaries if they pledge to withdraw if they come in behind another member of their own party in the primary. Do you pledge to withdraw from the race if, in the primary election, you receive fewer votes than another member of your own party?
14. Would you support establishing a national school choice tax credit (i.e. Educational Choice for Children Act) that allows families to access scholarships through private donations to help their child attend a K-12 school that best meets his or her needs?

Issue	John Wayne Howe	Richard Von Mayers	Mary Peltola	Matthew Salisbury
1. Would you support allowing public health programs such as Medicaid to cover infertility services like IVF?		YES ✓		
2. Would you oppose providing public funding for elective abortions beyond the federal Hyde amendment, which limits funding to instances of rape, incest and to save the mother's life?		NO ⊗		
3. Would you support establishing a federal prohibition on abortion after the point at which the baby can feel pain (approximately between 12 and 15 weeks)?		NO ⊗		
4. Would you support requiring immediate reasonable medical attention to be given to any baby that survives a failed abortion attempt?		YES ✓		
5. Would you support establishing age requirements for TikTok and other social media platforms?	DID NOT RESPOND	NO ⊗	DID NOT RESPOND	DID NOT RESPOND
6. Would you support prohibiting biological males who self-identify as female from competing on all-girls' high school or collegiate athletic teams?	DID NOT RESPOND	NO ⊗	DID NOT RESPOND	DID NOT RESPOND
7. Would you support prohibiting medical clinics from providing gender reassignment treatments and surgeries for minors, regardless of parental preference?	DID NOT RESPOND	YES ✓	DID NOT RESPOND	DID NOT RESPOND
8. Would you support restricting public funding for colleges and universities that require DEI (diversity, equity, and inclusion) training?	DID NOT RESPOND	YES ✓	DID NOT RESPOND	DID NOT RESPOND
9. Would you support prohibiting banks and investment entities from closing accounts of churches and faith-based entities because of their religious beliefs?	DID NOT RESPOND	YES ✓	DID NOT RESPOND	DID NOT RESPOND
10. Would you oppose allowing the 2017 Tax Cuts and Jobs Act, which lowered tax rates for families and expanded the child tax credit, to expire in 2025?	DID NOT RESPOND	YES ✓	DID NOT RESPOND	DID NOT RESPOND
11. Ballot Measure 2, which narrowly passed in 2020, overturned our traditional election method, eliminating party primaries and installing ranked-choice voting (RCV) in general elections. Do you support repealing Ballot Measure 2?	DID NOT RESPOND	NO ⊗	DID NOT RESPOND	DID NOT RESPOND
12. Did you sign the petition to repeal Ballot Measure 2?	DID NOT RESPOND	NO ⊗	DID NOT RESPOND	DID NOT RESPOND
13. Closed primaries allow members of political parties to elect the candidate who will carry their banner without interference from those who don't share their values. By replacing closed primaries with the current "jungle primary," Ballot Measure 2 allows multiple candidates from a single party to proceed to the general election, increasing voter confusion, and potentially leading to adverse outcomes due to ballot exhaustion. Candidates can effect the same result as closed primaries if they pledge to withdraw if they come in behind another member of their own party in the primary. Do you pledge to withdraw from the race if, in the primary election, you receive fewer votes than another member of your own party?		NO ⊗		
14. Would you support establishing a national school choice tax credit (i.e. Educational Choice for Children Act) that allows families to access scholarships through private donations to help their child attend a K-12 school that best meets his or her needs?		YES ✓		

RESPONSE MATRIX

This election, 10 of the 20 State Senate seats and all 40 of the State House seats are up for election. At the time of preparing this guide, there were a total of 117 candidates for state legislative races. Our Legislative Candidate Survey was sent to all candidates; the remaining pages of the guide show the responses from all candidates who participated in the survey.

Please note: candidates were provided opportunities to provide explanatory comments for each question. Due to space constraints, those comments are not reprinted in this guide. You may review all candidates' written comments online at akvoter.com.

Party Key

A: Alaskan Independence Party **D:** Democrat **L:** Libertarian **NP:** Nonpartisan **R:** Republican **U:** Undeclared **V:** Veterans Party

Response Key

✓ : Responded to survey

⊗ : Did not respond to survey

ALASKA SENATE B		ALASKA SENATE T		ALASKA HOUSE 10		ALASKA HOUSE 21		ALASKA HOUSE 33	
Kiehl, Jesse	D ⊗	Olson, Donald C. "Donny"	D ⊗	Johnson, Craig W.	R ✓	Mears, Donna C.	D ⊗	Prax, Glenn "Mike"	R ✓
				Kopp, Charles M. "Chuck"	R ⊗	Sims, Aimée	R ⊗	Welch, Michael W.	R ⊗
ALASKA SENATE D		ALASKA HOUSE 1				ALASKA HOUSE 22		ALASKA HOUSE 34	
Bjorkman, Jesse J.	R ✓	Bynum, Jeremy T.	R ⊗			Eischeid, Ted J.	D ⊗	Cottle, Joy "Joy Beth"	R ⊗
Carpenter, Ben	R ✓	Echohawk, Grant	NP ⊗	ALASKA HOUSE 11		Wright, Stanley A.	R ⊗	Tomaszewski, Frank	R ✓
Cizek, Andy	A ✓	Moran, Agnes C.	NP ⊗	Coulombe, Julie	R ⊗				
Wegener, Tina	D ⊗			Featherly, Walter T.	NP ⊗	ALASKA HOUSE 23		ALASKA HOUSE 35	
		ALASKA HOUSE 2				Allard, Jamie	R ✓	Carrick, Ashley E.	D ⊗
ALASKA SENATE F		Himschoot, Rebecca	NP ⊗	ALASKA HOUSE 12		Arlington, Jim	D ⊗	McNeill, Ruben A. Jr.	R ✓
Borbridge, Harold	R ⊗			Lurtsema, Joseph M. "Joe"	R ⊗				
Kaufman, James D.	R ⊗	ALASKA HOUSE 3		Schrage, Calvin R.	NP ⊗	ALASKA HOUSE 24		ALASKA HOUSE 36	
Park, Janice L.	D ⊗	Story, Andrea "Andi"	D ⊗			Saddler, Dan	R ✓	Fields, James	L ✓
				ALASKA HOUSE 13				Goode, Pamela	R ⊗
ALASKA SENATE H		ALASKA HOUSE 4		Gottshall, Heather	R ⊗	ALASKA HOUSE 25		Kowalski, Brandon P. "Putuuqti"	D ⊗
Claman, Matt	D ⊗	Hannan, Sara	D ⊗	Josephson, Andrew L. "Andy"	D ⊗	Johnson, Delena M.	R ⊗	Mock, Dana S.	R ⊗
McKay, Thomas "Tom"	R ⊗					ALASKA HOUSE 26		Schwanke, Rebecca A.	R ✓
Vazquez, Liz	R ✓	ALASKA HOUSE 5		ALASKA HOUSE 14		Tilton, Cathy	R ✓	Snodgress, Cole	R ✓
		Radner, Leighton	L ✓	Galvin, Alyse S.	NP ⊗				
ALASKA SENATE J		Stutes, Louise B.	R ⊗	Kamdern, Harry Winner	D ⊗	ALASKA HOUSE 27		ALASKA HOUSE 37	
Dunbar, Forrest	D ⊗					Eastman, David	R ✓	Deacon, Darren M.	NP ⊗
Smith, Cheronda L.	R ⊗	ALASKA HOUSE 6		ALASKA HOUSE 15		Underwood, Jubilee L.	R ✓	Edgmon, Bryce	U ⊗
		Greear, Alana L.	NP ⊗	Costello, Mia	R ✓				
ALASKA SENATE L		Johnson, Brent	NP ⊗	Darden, Dustin T.	D ✓	ALASKA HOUSE 28		ALASKA HOUSE 38	
Goecker, Jared D.	R ✓	Slaughter, Dawson R.	R ⊗	Wells, Denny	D ⊗	Menard, Steve	R ⊗	Jimmie, Nellie D. "Unangiq"	D ⊗
Hammermeister, Lee. E.	D ⊗	Vance, Sarah L.	R ✓			Moore, Elexie	R ⊗	Keppel, Willy	V ⊗
Jackson, Sharon D.	R ✓			ALASKA HOUSE 16		Sumner, Jesse M.	R ✓	McCormick, C.J.	D ⊗
McCarty, Ken	R ⊗	ALASKA HOUSE 7		Hall, Carolyn	D ⊗	Wright, Jessica	R ✓	Sosa, Victoria B.	D ⊗
Merrick, Kelly R.	R ⊗	Gillham, Ronald D. "Ron"	R ✓	Moe, Nick	NP ⊗				
		Ruffridge, Justin M.	R ⊗			ALASKA HOUSE 29		ALASKA HOUSE 39	
ALASKA SENATE N				ALASKA HOUSE 17		Rauscher, George	R ⊗	Foster, Neal W.	D ⊗
Wilson, David S.	R ⊗	ALASKA HOUSE 8		Fields, William Z. "Zack"	D ⊗	Wall, Bruce	NP ⊗	Ivanoff, Tyler	NP ⊗
Wright, Stephen	R ✓	Elam, Bill	R ✓						
Yundt, Robert	R ✓	Hillyer, John	R ✓	ALASKA HOUSE 18		ALASKA HOUSE 30		ALASKA HOUSE 40	
				Groh, Cliff	D ⊗	Holmes, Doyle E.	R ⊗	Baker, Thomas C. "Ikaaq"	U ⊗
ALASKA SENATE P		ALASKA HOUSE 9		Nelson, David	R ⊗	McCabe, Kevin J.	R ✓	Burke, Robyn "Niayuq"	D ⊗
Hajdukovich, Leslie W.	R ✓	Bauer, Lucy	R ✓					Chase, Saima "Ikrik"	D ⊗
Kawasaki, Scott	D ⊗	Ellis, Lee E.	R ⊗	ALASKA HOUSE 19		ALASKA HOUSE 31			
		Holland, Ky	NP ⊗	Anderson, Kaylee M.	R ⊗	Dibert, Maxine L.	D ⊗		
ALASKA SENATE R		Pennington, Brandy	R ⊗	Mina, Genevieve G.	D ⊗	LeBon, Bart	R ✓		
Cronk, Mike	R ✓			Wyatt, Russell O.	U ⊗			ALASKA HOUSE 32	
Fletcher, Savannah	U ⊗	ALASKA HOUSE 20				ALASKA HOUSE 32		Damron, Gary K.	D ⊗
Squyres, James A.	R ⊗	Gray, Andrew T.	D ⊗						
Williams, Robert "Bert"	A ⊗	Kohlhaas, Scott A.	L ✓						



ALASKA STATE SENATE



DISTRICT R

Donald Olson

1. Do you support an amendment clarifying that the Alaska state constitution does not provide for a right to abortion, or the right for public funding of abortion?
2. Do you support an amendment to the Alaska state constitution that would protect the right of a parent to provide consent and/or receive notice before an abortion is performed on the parent's minor child?
3. Would you support a bill like HB 107 which would define personhood and life as beginning at conception?
4. Do you support eliminating state government funding of Planned Parenthood, and all other entities that either perform or promote abortions?
5. Would you support a bill like HB 338, which would hold medical professionals financially liable for harm caused to minors for whom they conducted "gender transitioning" procedures?
6. STATEMENT: Publicly funded buildings that maintain multi-occupancy locker rooms, showers, restrooms, and similar facilities should be required by law to designate such facilities for use only by persons of the same biological sex.
7. Would you support a bill like HB 105 which would recognize parents' authority to determine whether their child should be exposed to sex education classes, to specify which nouns and pronouns their child will use in school, and to have access to their child's full school records?
8. Do you support allowing all parents to use tax credits and taxpayer funded empowerment scholarship accounts to enable their children to attend any private school, homeschool, or online academy of their choice?
9. Would you support a bill like HB 183, the "Save Girls' Sports Act," which would prohibit biological males from competing in women's sports?
10. Would you support permitting individuals and businesses to not provide services or promote ideas that violate their moral or religious beliefs?
11. Would you refuse to join a coalition majority in which the opposite political party controls a majority of seats?

DID NOT RESPOND



ALASKA STATE HOUSE

DISTRICT 37



Darren Deacon

Bryce Edgmon

DISTRICT 38



Nellie "Unangiq" Jimmie

Willy Keppel

C.J. McCormick

Victoria Sosa

1. Do you support an amendment clarifying that the Alaska state constitution does not provide for a right to abortion, or the right for public funding of abortion?

2. Do you support an amendment to the Alaska state constitution that would protect the right of a parent to provide consent and/or receive notice before an abortion is performed on the parent's minor child?

3. Would you support a bill like HB 107 which would define personhood and life as beginning at conception?

4. Do you support eliminating state government funding of Planned Parenthood, and all other entities that either perform or promote abortions?

5. Would you support a bill like HB 338, which would hold medical professionals financially liable for harm caused to minors for whom they conducted "gender transitioning" procedures?

6. STATEMENT: Publicly funded buildings that maintain multi-occupancy locker rooms, showers, restrooms, and similar facilities should be required by law to designate such facilities for use only by persons of the same biological sex.

7. Would you support a bill like HB 105 which would recognize parents' authority to determine whether their child should be exposed to sex education classes, to specify which nouns and pronouns their child will use in school, and to have access to their child's full school records?

8. Do you support allowing all parents to use tax credits and taxpayer funded empowerment scholarship accounts to enable their children to attend any private school, homeschool, or online academy of their choice?

9. Would you support a bill like HB 183, the "Save Girls' Sports Act," which would prohibit biological males from competing in women's sports?

10. Would you support permitting individuals and businesses to not provide services or promote ideas that violate their moral or religious beliefs?

11. Would you refuse to join a coalition majority in which the opposite political party controls a majority of seats?

DID NOT RESPOND	DID NOT RESPOND	DID NOT RESPOND	DID NOT RESPOND	DID NOT RESPOND	DID NOT RESPOND
DID NOT RESPOND	DID NOT RESPOND	DID NOT RESPOND	DID NOT RESPOND	DID NOT RESPOND	DID NOT RESPOND



ALASKA STATE HOUSE

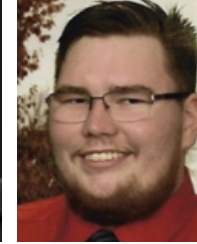
DISTRICT 39



Neal Foster



Tyler Ivanoff



Thomas "Ikaa" Baker



Robyn "Niayuq" Burke



Saima "Ikrik" Chase

1. Do you support an amendment clarifying that the Alaska state constitution does not provide for a right to abortion, or the right for public funding of abortion?
2. Do you support an amendment to the Alaska state constitution that would protect the right of a parent to provide consent and/or receive notice before an abortion is performed on the parent's minor child?
3. Would you support a bill like HB 107 which would define personhood and life as beginning at conception?
4. Do you support eliminating state government funding of Planned Parenthood, and all other entities that either perform or promote abortions?
5. Would you support a bill like HB 338, which would hold medical professionals financially liable for harm caused to minors for whom they conducted "gender transitioning" procedures?
6. STATEMENT: Publicly funded buildings that maintain multi-occupancy locker rooms, showers, restrooms, and similar facilities should be required by law to designate such facilities for use only by persons of the same biological sex.
7. Would you support a bill like HB 105 which would recognize parents' authority to determine whether their child should be exposed to sex education classes, to specify which nouns and pronouns their child will use in school, and to have access to their child's full school records?
8. Do you support allowing all parents to use tax credits and taxpayer funded empowerment scholarship accounts to enable their children to attend any private school, homeschool, or online academy of their choice?
9. Would you support a bill like HB 183, the "Save Girls' Sports Act," which would prohibit biological males from competing in women's sports?
10. Would you support permitting individuals and businesses to not provide services or promote ideas that violate their moral or religious beliefs?
11. Would you refuse to join a coalition majority in which the opposite political party controls a majority of seats?



DID NOT RESPOND

DID NOT RESPOND

DID NOT RESPOND

DID NOT RESPOND

DID NOT RESPOND



Scan this code with your phone's camera to visit
akvoter.com for all candidate guides!



OUR PILLARS

Public Policy

Advocating for laws that uphold the truth of the Gospel to protect and promote our fundamental freedoms across the nation.

Engagement

Networking, equipping, and empowering businesses, churches, and families to have an active voice in their government and local communities.

Education

Equipping citizens and the next generation to understand the political and cultural issues facing us today, and empowering them to know how to respond.

Alaska Family Action created [akvoter.com](https://www.akvoter.com) as the Values Voter Guide go-to resource for elections across our state and beyond. From school boards, local assembly and mayor races to state legislative races, Governor and U.S Congress to U.S. President, visit [akvoter.com](https://www.akvoter.com) regularly to equip yourself and make an informed vote.

THIS COMMUNICATION WAS PAID FOR BY ALASKA FAMILY ACTION, INC., ANCHORAGE, ALASKA. I AM JIM MINNERY, PRESIDENT OF ALASKA FAMILY ACTION, INC., AND I APPROVE THIS MESSAGE. THIS NOTICE TO VOTERS IS REQUIRED BY ALASKA LAW. WE CERTIFY THAT THIS COMMUNICATION IS NOT AUTHORIZED, PAID FOR, OR APPROVED BY ANY CANDIDATE BEING ENDORSED. WWW.AKFAMILY.ORG. 907-279-2825
